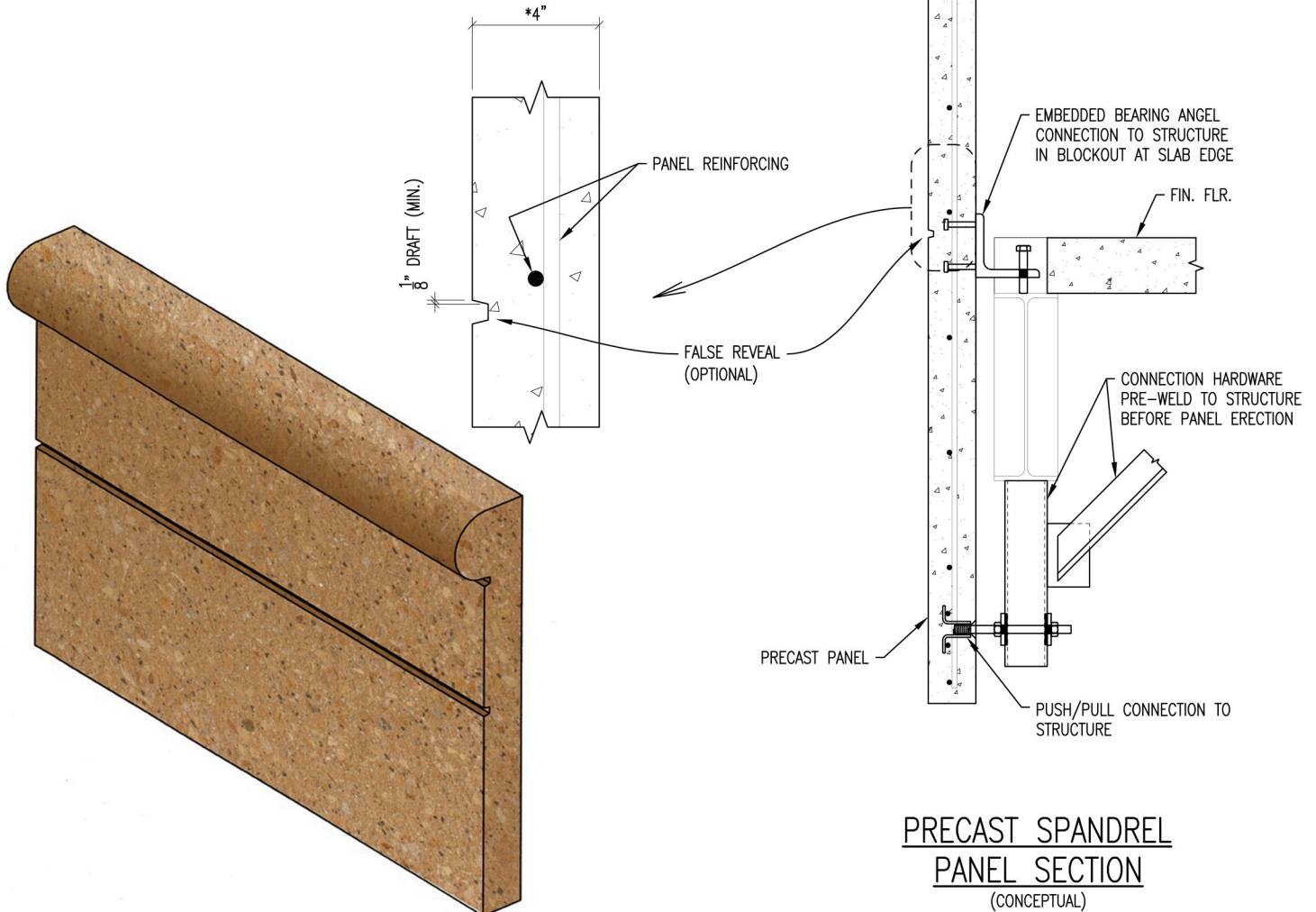


*NOTE: 4" PANEL SYSTEM THICKNESS IS FOR REFERENCE ONLY. ACTUAL DESIGN THICKNESS WILL BE DETERMINED BY BOTH PROJECT AND PRECAST PANEL DESIGN REQUIREMENTS, IN COMBINATION WITH THE PROJECT DESIGN INTENT.



Architectural Precast is durable, provides moisture protection, and aesthetic versatility. Panel thickness is based upon design needs of the project and are cast with a custom color chosen by the Architect. Panels are normally given a light, medium, or heavy sandblast finish. Casting Architectural Precast starts with a precisely leveled casting surface. The perimeter forms of the panel are set and any designed depressions desired in the panel face, such as reveals, are secured to the panel form. The edge of all form parts are sealed with silicone before installing the reinforcing steel, connection embedments, and the stripping and erection inserts. Once the panel has been inspected, the custom mix is then poured into the form. Concrete vibrators assist in consolidating the concrete to its final design thickness. The following morning each panel is stripped from its form and receives it's approved sandblast finish. Before finalizing the design of your next project, contact Willis Constructions Design Build team to take full advantage of the many design options of Architectural Precast.