

**Panel Description**

Architectural Thinshell Precast panels consist of a 2 1/4" thick solid concrete skin attached to a steel stud frame. The frame is typically made from 4" deep tube steel members. The overall thickness of this system is typically 7 1/2". Studs are typically placed at 2'-0" on center and have 3/8" diameter galvanized steel pins welded to the steel frame. These pins are embedded in the 2 1/4" concrete skin which is reinforced with a welded wire fabric. The entire concrete skin and frame system weighs approximately 32 pounds per square foot. The maximum size of a Thinshell panel is determined by material properties, project requirements and shipping limits. Thinshell Precast panels are limited to flat wall surfaces. In some cases small bullnose projections and minimal panel returns can be used but add more weight and cost to this system.

Contact Willis Construction to discuss your projects specific design.

**Visit us at : [www.willisconstruction.com](http://www.willisconstruction.com)**





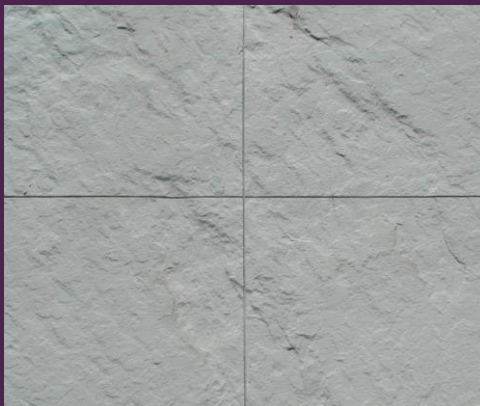
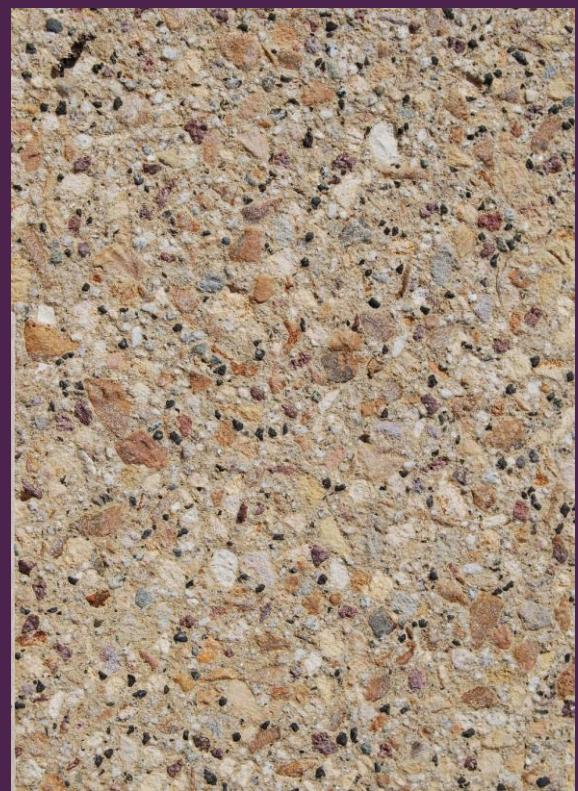
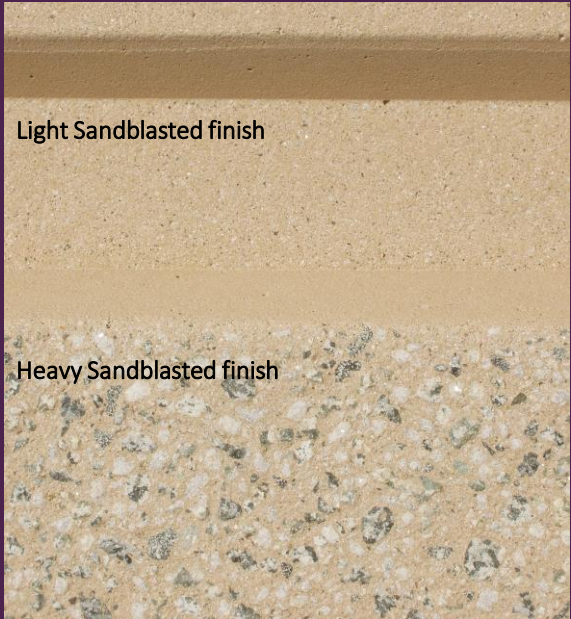
# *Providing Innovative Solutions to Creative Pre-cast Designs*

## Thinshell Precast

### Architectural Design Options

Thinshell Precast Panels are limited to flat wall type surfaces. In some cases small bullnose projections and minimal panel returns can be used but add more weight and cost to this system. Reveals are limited to 1/2 " deep maximum. Thinshell Precast mix designs come in a wide range of colors and textures. There are no standard colors. All of our mix designs are custom made to the designer's choice of color and sandblasted finish. Light sandblast finishes leave the matrix color in place and the surface fairly smooth. A heavy sandblast finish will expose the aggregate in the mix to create a completely different look. Utilizing Light and Heavy sandblasted finishes in the same panel, or project, is a common design option. Custom Form liners can also make the surface of Thinshell simulate other natural materials such as Brick, Wood, or Stone. Thinshell Precast provides all of the aesthetic design options of Architectural Precast at almost half the weight.

Contact Willis Construction to discuss your projects specific design.



**Visit us at : [www.willisconstruction.com](http://www.willisconstruction.com)**

